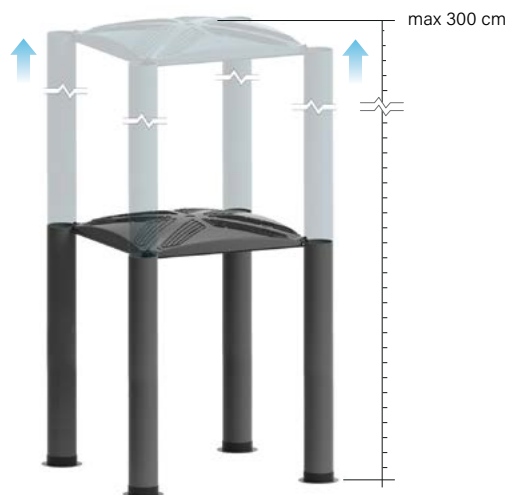


## Sistema Atlantis 100%

## H. 56 / H. 300 cm



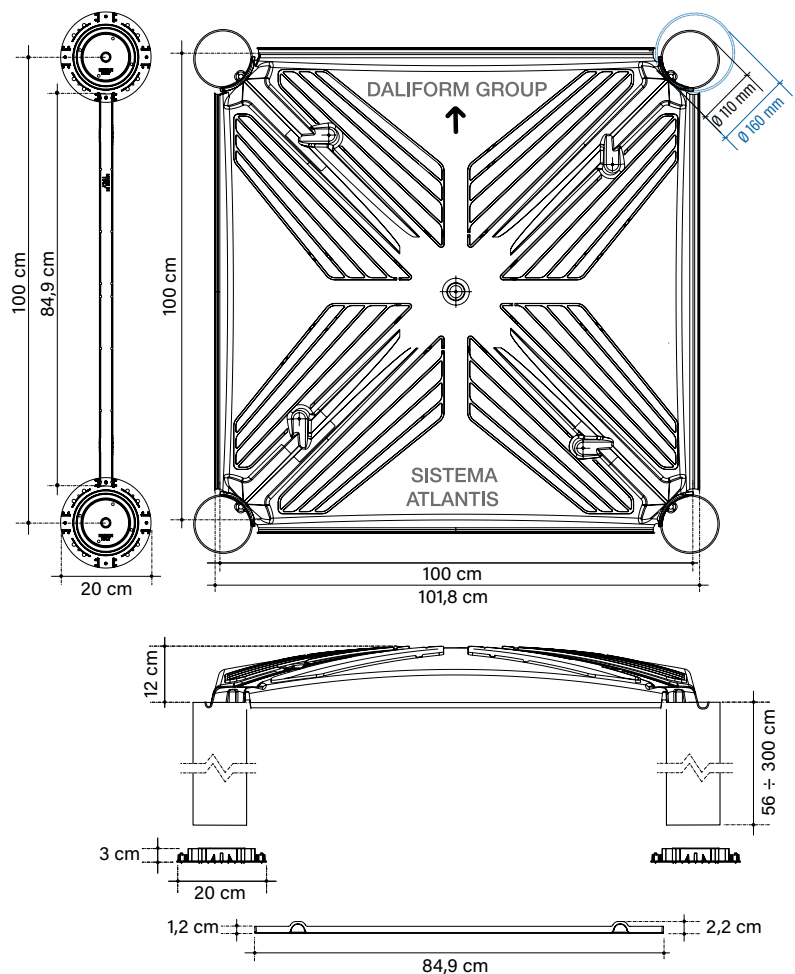
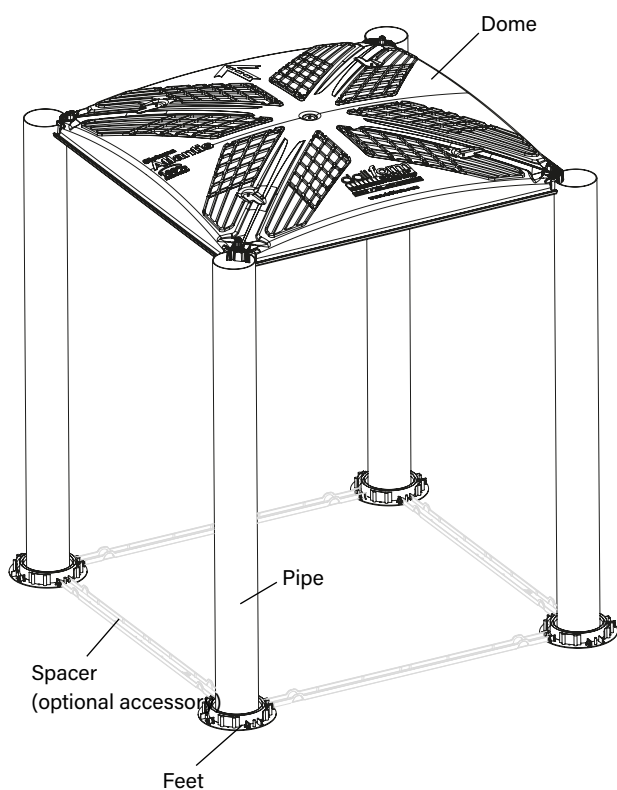
Atlantis 100x100 is an advanced system for creating cavities in general, under-floor cavities and ventilated floors in newly constructed or restructured civil and industrial buildings, accumulation tanks, dispersion tanks, honeycomb rafts, low temperature cold rooms.

It is suited for creating thermally insulated cavities for cold rooms with or without forced ventilation. It is the ideal solution for creating accumulation or dispersion tanks and for pool restructuring. Thanks to custom sized elevator pipes, it is the ideal system for creating inclined or multilevel surfaces.

You can reach 3 m of height thanks to the pipes system.

For exceeding heights, please contact our technical office.

Made of ALAPLEN® CP30



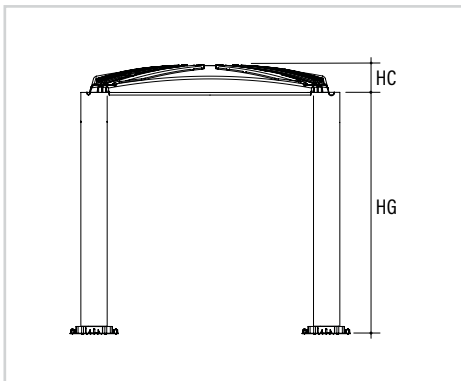
Atlantis 71x71 System includes, for each square meter, 1 formworks, 1 pipes, 1 feet (and 2 optional spacers).

The images are only for examples.

Recyclable material is allowed a size tolerance of  $\pm 1,5\%$ .

## TECHNICAL DATA

### SISTEMA ATLANTIS H 56 / H 300 cm



Useful size *	cm	100 x 100
Height HC	cm	12
Dome weight	kg	10,164
Height HG	cm	da 44 a 288
Quantity of concrete to the top of dome **	m <sup>3</sup> /m <sup>2</sup>	view formula
Pallet dimensions***	cm	110 x 110 x 254 h
Sq.mt. per pallet ***	m <sup>2</sup> /PAL	70
Pieces per pallet ***	pcs/PAL	70
Pallet weight ***	kg/PAL	700

\* Recyclable material is allowed a size tolerance of  $\pm 1,5\%$ .

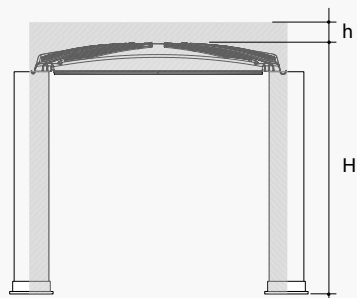
\*\* The volume may vary depending on the pouring condition and the tolerance of the material.

\*\*\* For production necessity the technical data can be change. Referred to the dome only.



### Formula to calculate concrete consumption

The formula considers the higher volume of concrete due to natural deflection of the formwork.



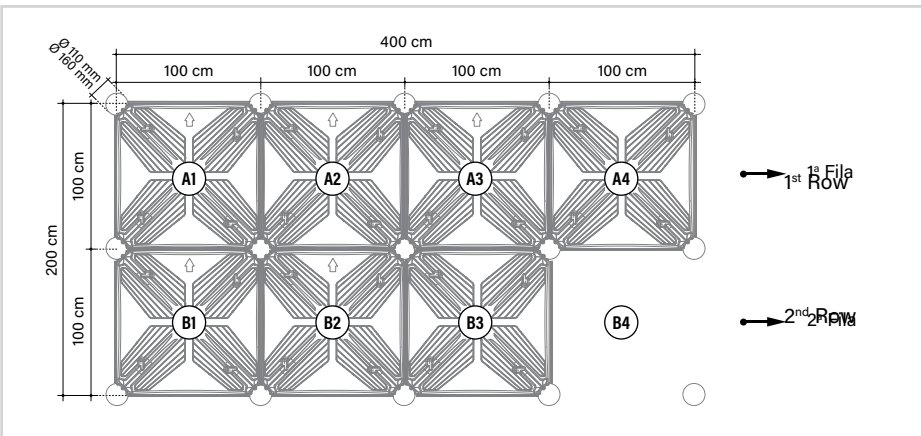
Ø 110 mm	$VCLS = h/100 + 0,0330 + 0,0090 \times H/100$
Ø 160 mm	$VCLS = h/100 + 0,0316 + 0,0194 \times H/100$

**VCLC** = concrete volume in m<sup>3</sup>/m<sup>2</sup>

**h** = height of upper slab in cm

**H** = total height of Atlantis system, before concrete casting, in cm.

## DRY-STONE LAYING SEQUENCE OF ATLANTIS SYSTEM 100x100 cm



The system has to be constrained on the perimeter not to undergo displacements on the horizontal plane.

In the case of joints, compensations, different heights and/or large dimensions of works, take the necessary precautions and proceed with casting for sub-areas, rigidly contained.

The Technical Office is available to provide planning support both in the preliminary and in the executive phase to determine the technical characteristics of the structures, the related construction costs and perform comparative analyzes with alternative technical solutions. Upon request, it is also possible to take advantage of technical assistance on site.



**Dry-stone time-exposure of system Atlantis: 40-50 m<sup>2</sup>/h\***

\* without panels on the floor.

### Concrete casting prescription:

use concrete having adequate characteristics (concrete class C20/25 at least, diameter of aggregates proper to avoid segregation).

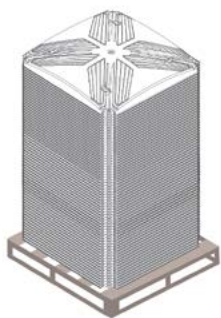
**Respect ordinary concrete casting prescriptions.**



**CAREFUL! The operating temperatures are between 7 °C e 35 °C. Take the necessary precautions in case of different temperatures.**

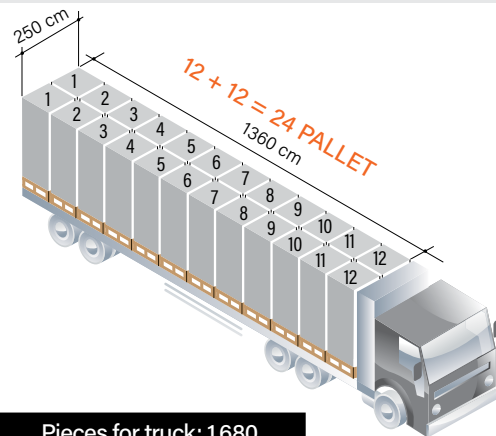
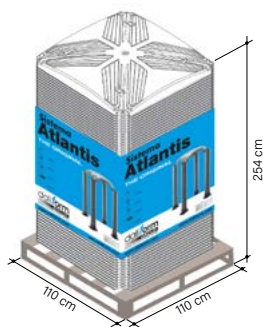
**The Atlantis System 100x100 cm, allows to cast a slab having maximum 10 cm. For thicker slabs it is necessary to order special formworks (which will be delivered with a proper declaration), prop adequately or realize two separated castings.**

## PACKAGING AND TRUCKING



1 pallet: 1 piles of 70 pieces

Pieces for pallet: 70



Pieces for truck: 1.680

## LABELLING

Each pallet is identified with:



A coloured band containing:  
the brand, a type image of the product,  
the Company name, the website and  
any warnings.



A label with the following informations: product's  
name and code, quantity, Certificate of the  
Environmental Compatibility, date of production, shift  
of production, n° of the worker, production line batch.

## CREDITS

- BBA;
- Declaration of Performance Conformity;
- Hygienic Certificate;
- Rupture load tests;
- Certificate of Environmental Compatibility.

The product does not fear the weather and can be stored outside. Take the utmost care to prevent the product from being deformed or overstressed during the unloading, storage and assembly. In case of disposal the product is totally recyclable.

## ACCESSORIES

### SPACER

The Atlantis System 100x100, for each square meter, needs 2 spacers



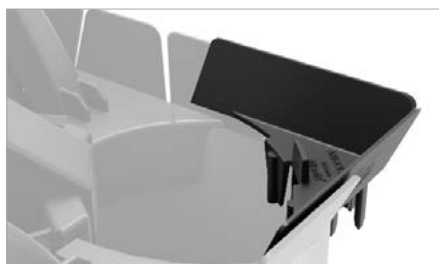
Useful size*	cm	84,9 x 3
Height	cm	2,2
Piece weight	kg	0,105
Pieces per box**	pcs/BOX	180
Pallet dimensions**	cm	100 x 120 x 217
Pieces per pallet**	pcs/PAL	4,320
Pallet weight**	kg/PAL	501

### TYMPANUM



		Ø 110 mm PIPE	Ø 160 mm PIPE
Useful size*	cm	99,8 x 7	99,8 x 9,5
Height	cm	5,5	5,5
Piece weight	kg	0,395	0,457
Pieces per box**	pcs/BOX	100	72
Pallet dimensions**	cm	80 x 120 x 115	80 x 120 x 115
Pieces per pallet**	pcs/PAL	400	288
Pallet weight**	kg/PAL	177	151

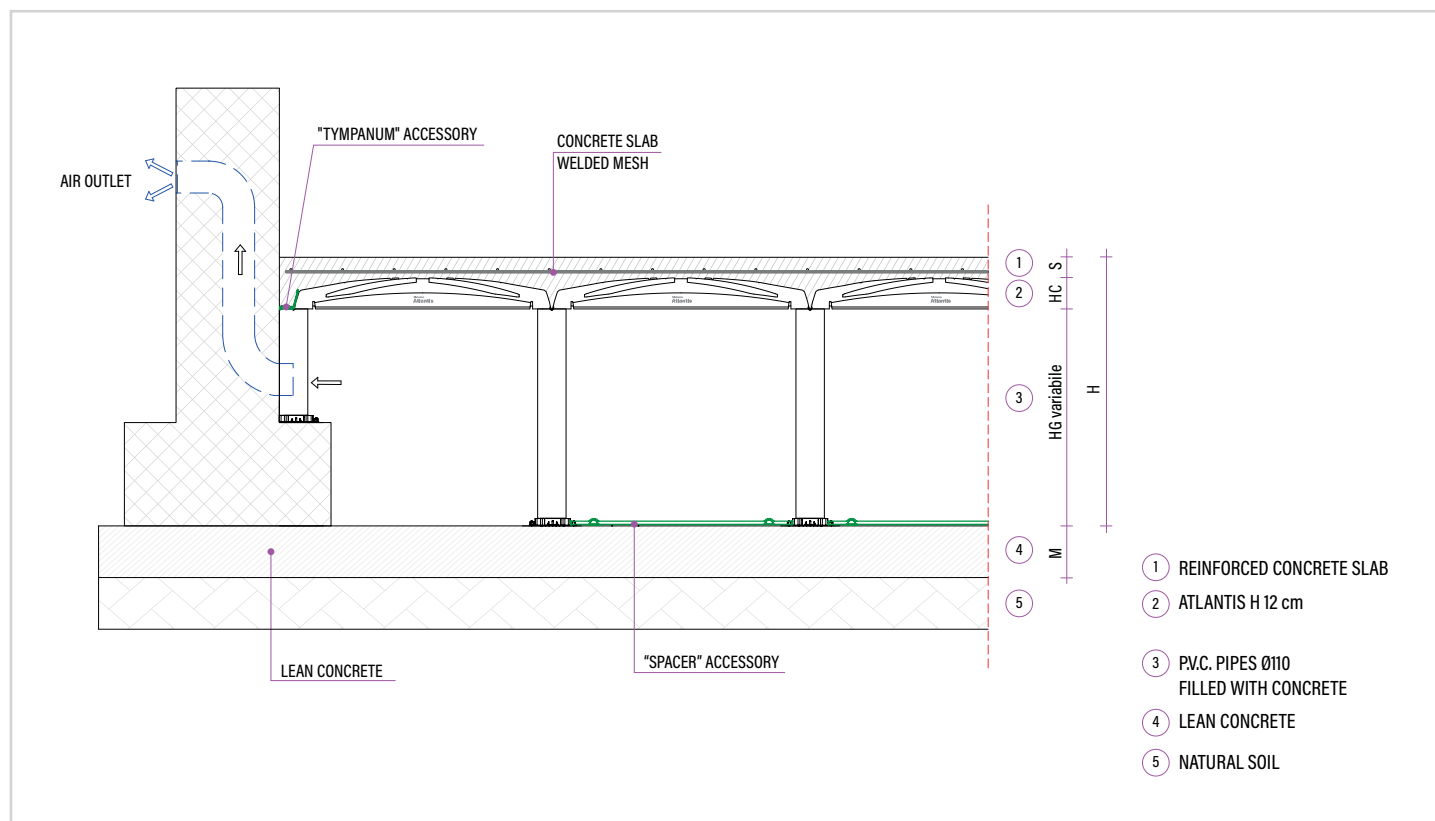
### ANGLE



Useful size*	cm	8,4 x 11,8
Height	cm	4,4
Piece weight	kg	0,02
Pieces per box**	pcs/BOX	300
Pallet dimensions**	cm	110 x 110 x 191
Pieces per pallet**	pcs/PAL	9.600
Pallet weight**	kg/PAL	226

## CONSTRUCTION DETAIL

To download all construction details: [www.daliform.com](http://www.daliform.com) - download section

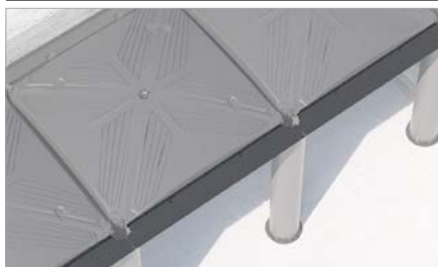


Recyclable material is allowed a size tolerance of  $\pm 1,5\%$ .

\*\* For production necessity the technical data can be change. Referred to the accessory only.

## ACCESSORIES

### SHELF



Useful size*	cm	99,8 x 13,5
Height H	cm	3,1
Piece weight	kg	0,546
Pieces per box**	pcs/BOX	72
Pallet dimensions**	cm	80 x 120 x 115
Pieces per pallet**	pcs/PAL	288
Pallet weight**	kg/PAL	176

### COMPENSATION PANEL



Useful size	cm	200 x 50
Thickness	cm	1
Piece weight	kg	2
Pieces per box**	cm	200 x 100 x 120
Pieces per pallet**	pcs/PAL	200
Pallet weight**	kg/PAL	420

### FLANGE



Useful size*	cm	28,2 x 28,2
Height H	cm	4,3
Piece weight	kg	0,588
Pieces per box**	pcs/BOX	17
Pallet dimensions**	cm	100 x 120 x 255
Pieces per pallet**	pcs/PAL	510
Pallet weight**	kg/PAL	344

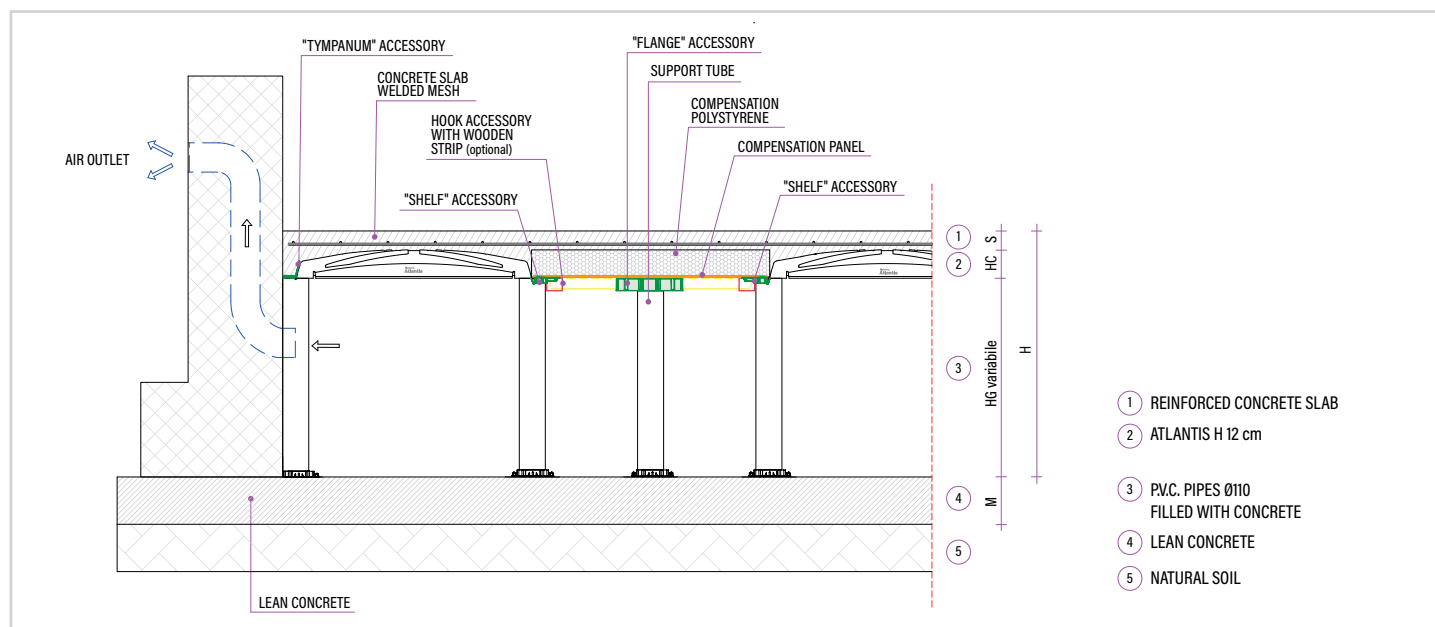
### HOOK



Useful size*	cm	3,8 x 7,5 x 8,2
Height H	cm	8,1
Piece weight	kg	0,099
Pieces per box**	pcs/BOX	80
Pallet dimensions**	cm	110 x 110 x 191
Pieces per pallet**	pcs/PAL	2.560
Pallet weight**	kg/PAL	283

## CONSTRUCTION DETAIL

To download all construction details: [www.daliform.com](http://www.daliform.com) - download section



Recyclable material is allowed a size tolerance of  $\pm 1,5\%$ .

\*\* For production necessity the technical data can be change. Referred to the accessory only.